

NODIADAU ER GWYBODAETH:

- Y gefnffordd newydd y mae angen y tir sydd wedi'i amlinellu ar y ddalen hon ar ei chyfer, yw'r Gorchymyn Cefnffordd Caer i Fangor (yr A55) (Gwelliant Ailalinio Cyffwrdd 16 ac 16A a'r Ffyrdd Ymuno ac Ymadael) 202-
- Am welliannau prifffordd ar dir wedi'i amlinellu ar y ddalen hon, gweler Cynllun Safle 2 o Gorchymyn Cefnffordd Caer i Fangor (yr A55) (Gwelliant Ailalinio Cyffwrdd 16 ac 16A a'r Ffyrdd Ymuno ac Ymadael) (Ffyrdd Ymyl) 202-

NOTES FOR INFORMATION:

- The new trunk roads for which land delineated on this sheet is required is referred to in the associated Chester to Bangor Trunk Road (A55) (Junctions 16 and 16A Improvement Realignment and Slip Roads) Order 202-
- For improvement of highways on land delineated on this sheet, see Site Plan 2 of the Chester to Bangor Trunk Road (A55) (Junctions 16 and 16A Improvement Realignment and Slip Roads) (Side Roads) Order 202-

ALLWEDD/KEY:

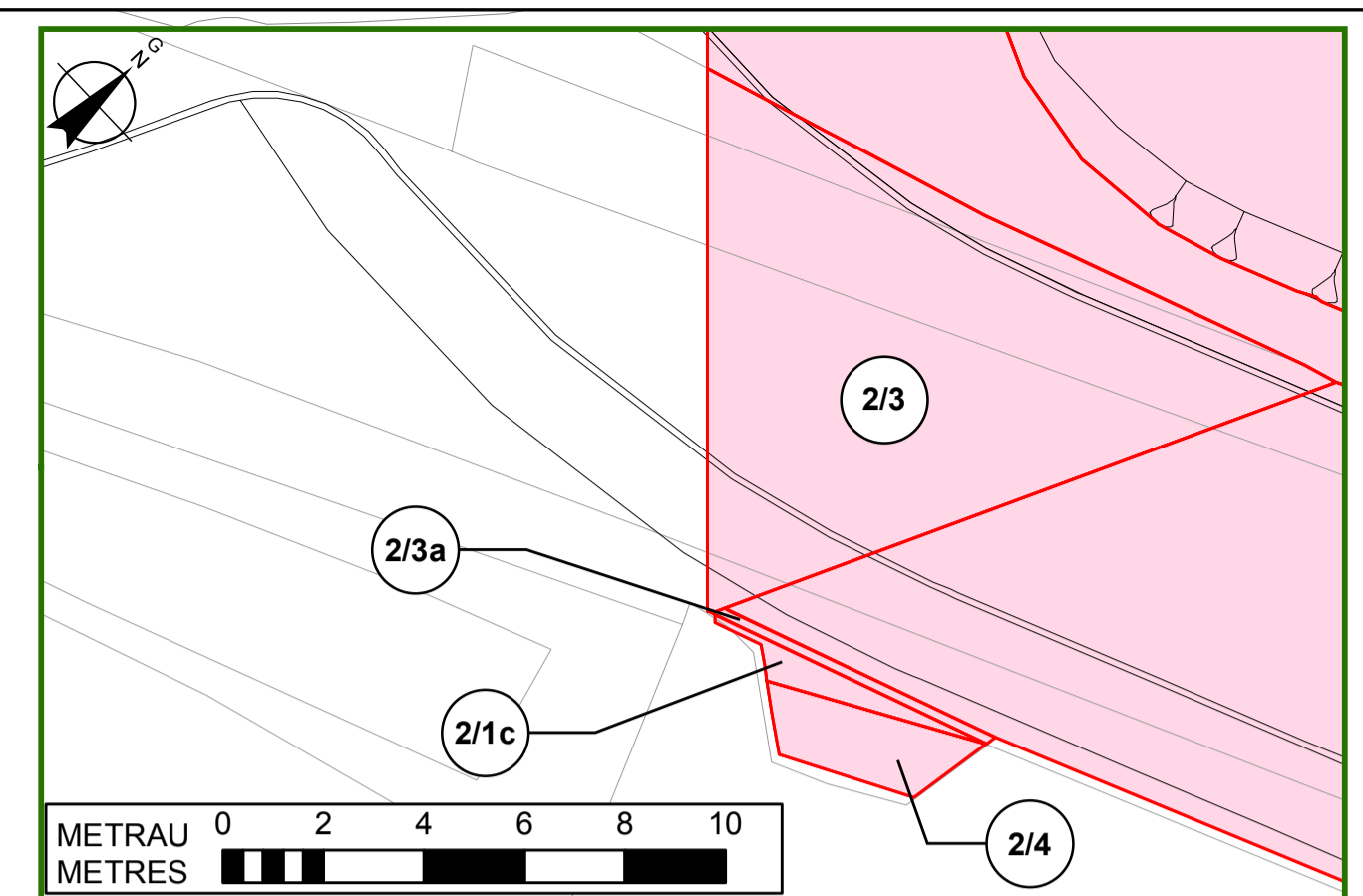
- Teitl / Title
- Hawddfrait / Easement
- Tir Cyfnewid / Exchange Land
- Ffyrdd Cyhoeddus / Public Right of Way
- Llinell Ganolog y Cefnffordd Newydd
Centre Line of New Trunk Road

**GORCHYMYN PRYNU GORFODOL
GWEINIDOGION CYMRU (CEFNFFORDD
CAER I FANGOR (YR A55) (GWELLIANT
AILALINIO CYFFWRDD 16 AC 16A A'R
FFYRDD YMUNO AC YMADAEL)) 202-**

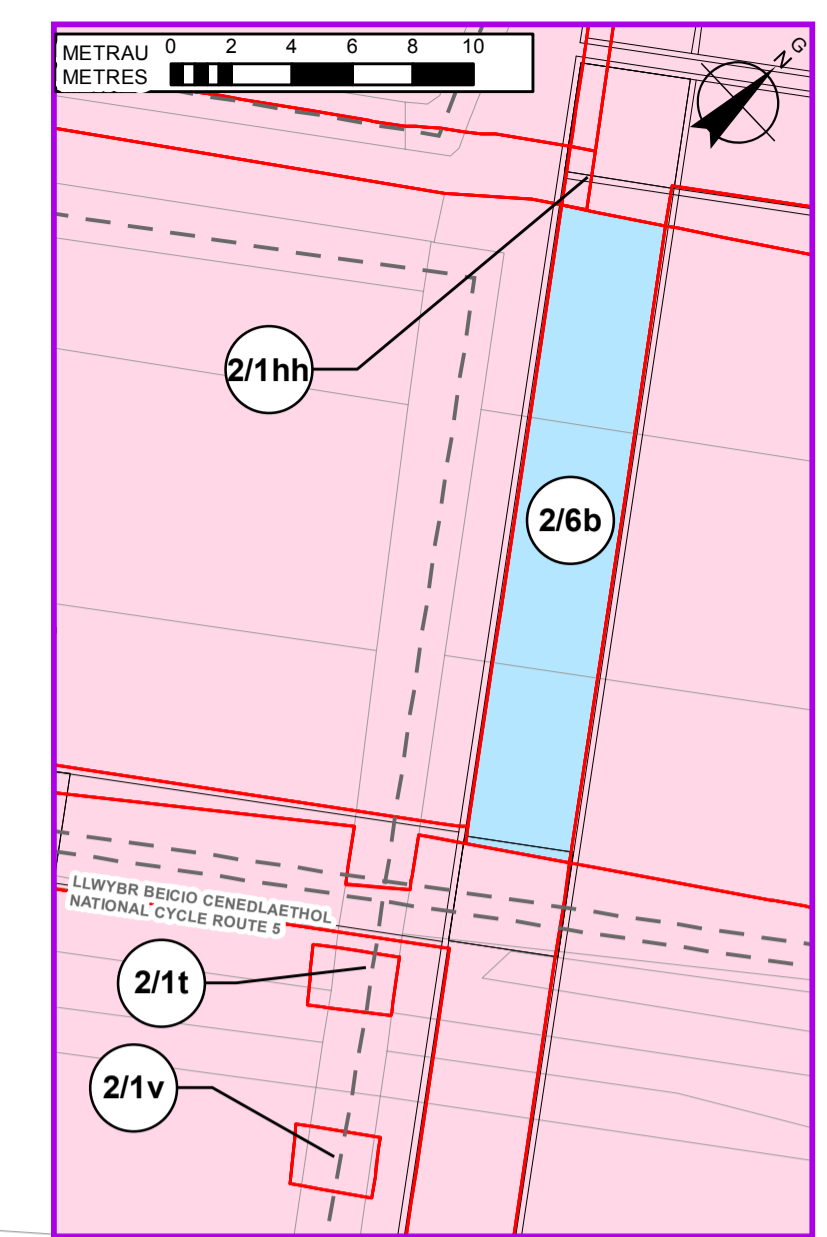
**THE WELSH MINISTERS (THE CHESTER TO
BANGOR TRUNK ROAD (A55) (JUNCTIONS 16
AND 16A IMPROVEMENT REALIGNMENT
AND SLIP ROADS)) COMPULSORY
PURCHASE ORDER 202-**

**GORCHYMN PRYNU GORFODOL TAFLEN 2 O 4
GYDA CHYNLLUN GOSODIAD DRAFFT Y CYNLLUN
WEDI'I OSOD DROSTO**

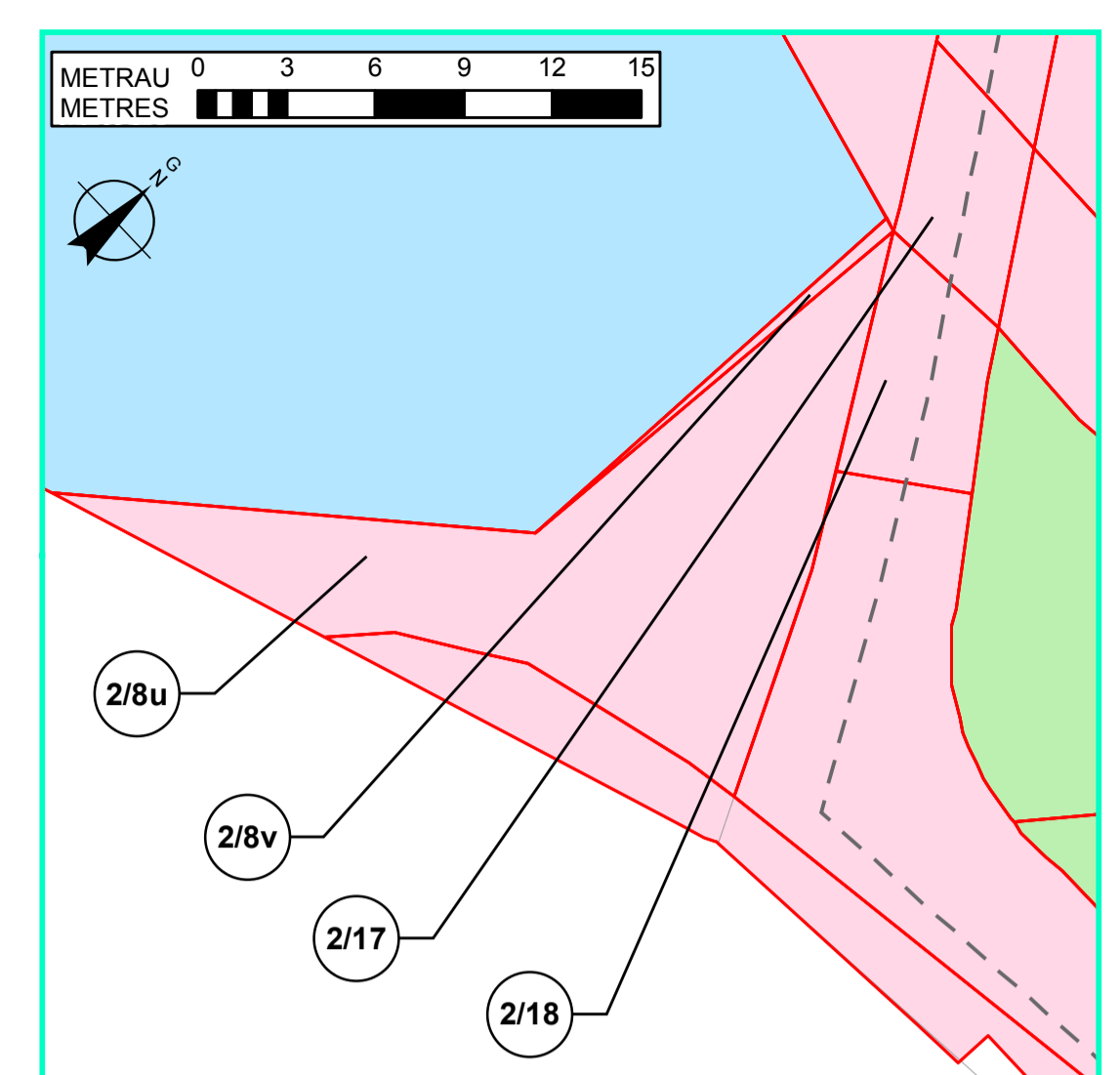
**COMPULSORY PURCHASE ORDER SHEET 2 OF 4
OVERLAID WITH DRAFT SCHEME LAYOUT PLAN**



**Mewnosodiad C Graddfa 1:150
Inset C Scale 1:150**



**Mewnosodiad E Graddfa 1:250
Inset E Scale 1:250**



**Mewnosodiad G Graddfa 1:250
Inset G Scale 1:250**

Parhad ar Gynlluniau
Safle 1
Cont'd on Site
Plan 1

Parhad ar Gynlluniau
Safle 3
Cont'd on Site
Plan 3

Gweler
Fewnosodiad C
See Inset C

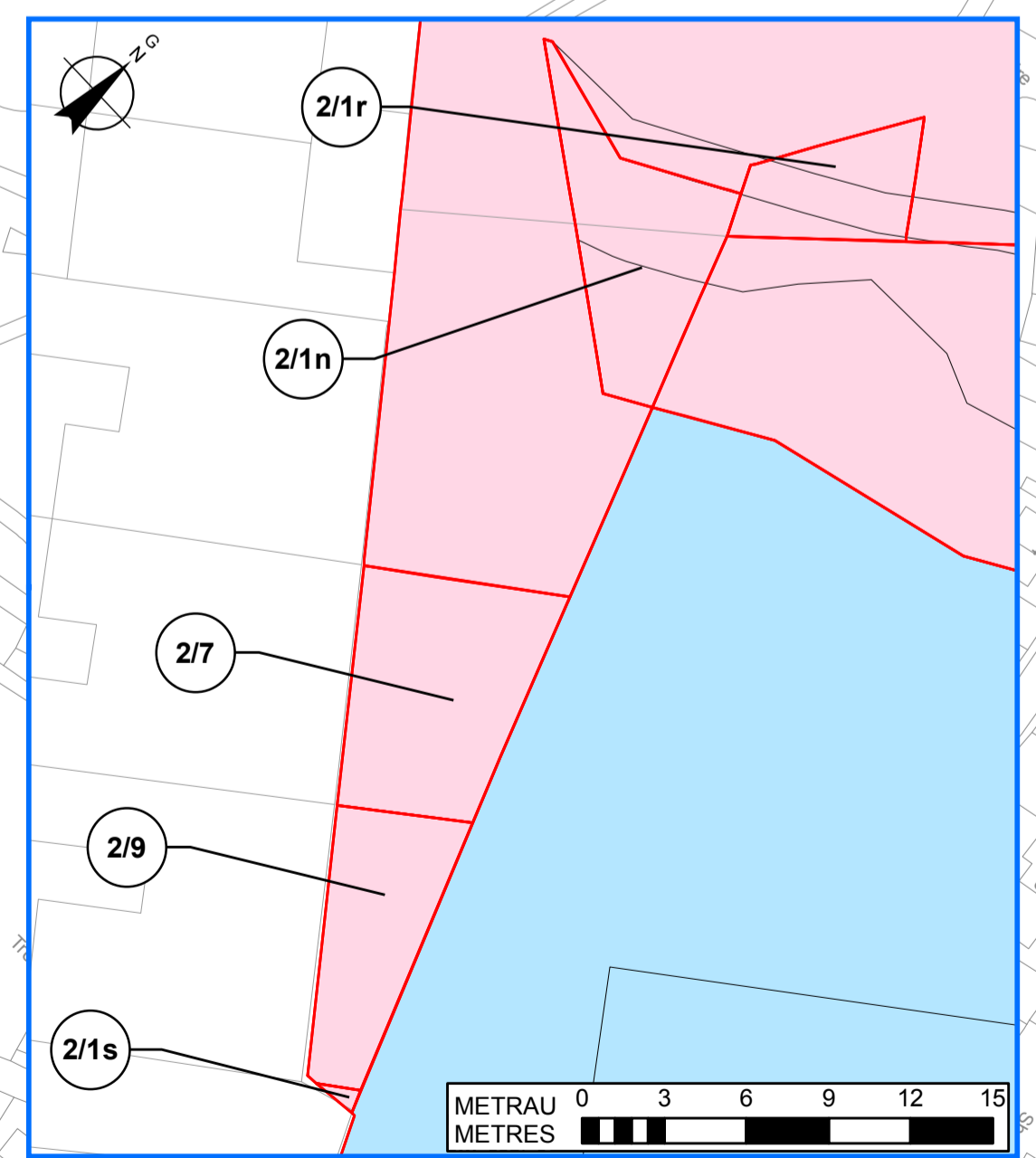
Parhad ar Gynlluniau
Safle 1
Cont'd on Site
Plan 1

Gweler
Fewnosodiad D
See Inset D

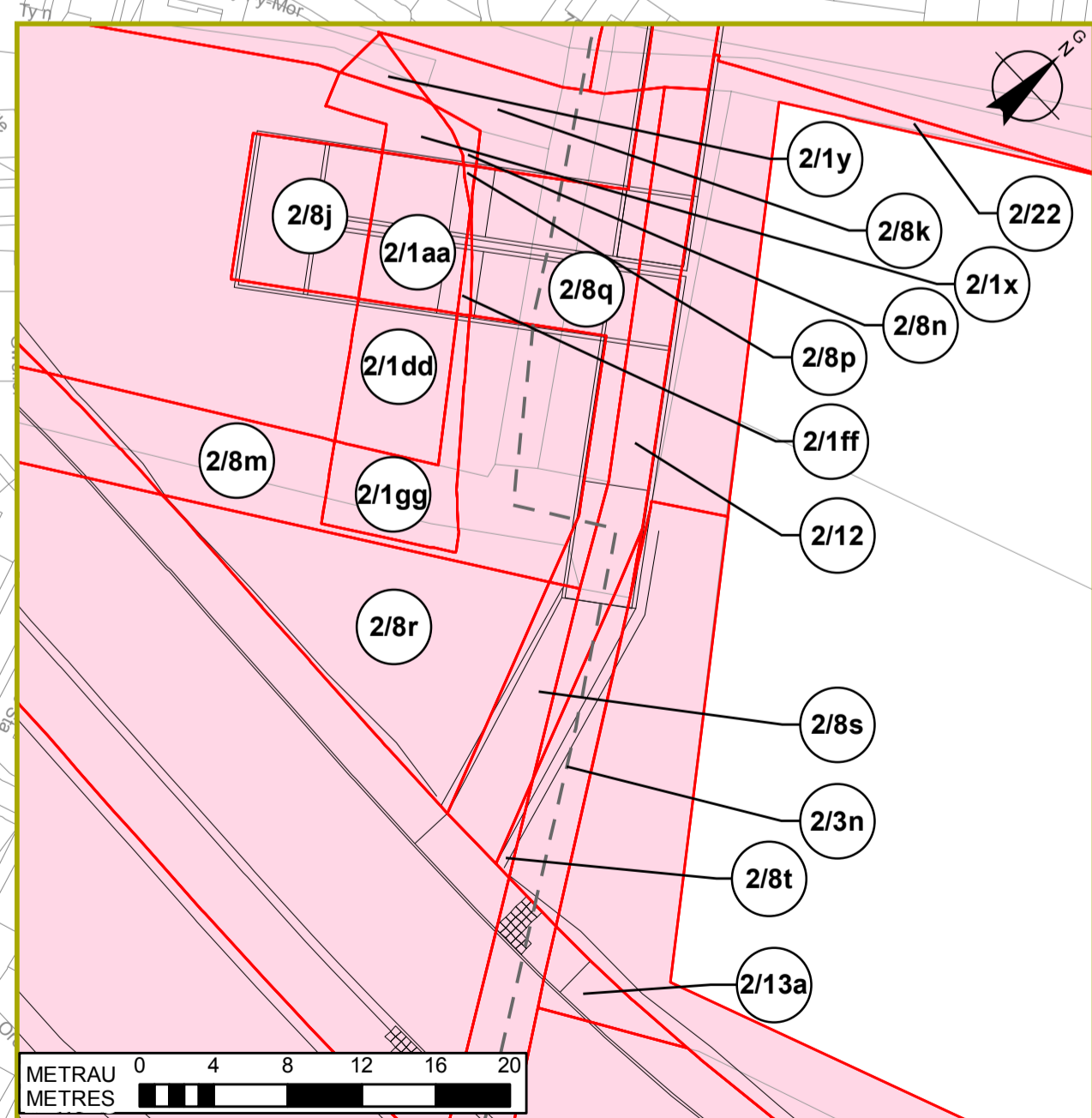
Gweler
Fewnosodiad E
See Inset E

Gweler
Fewnosodiad F
See Inset F

Gweler
Fewnosodiad G
See Inset G



**Mewnosodiad D Graddfa 1:250
Inset D Scale 1:250**



**Mewnosodiad F Graddfa 1:350
Inset F Scale 1:350**